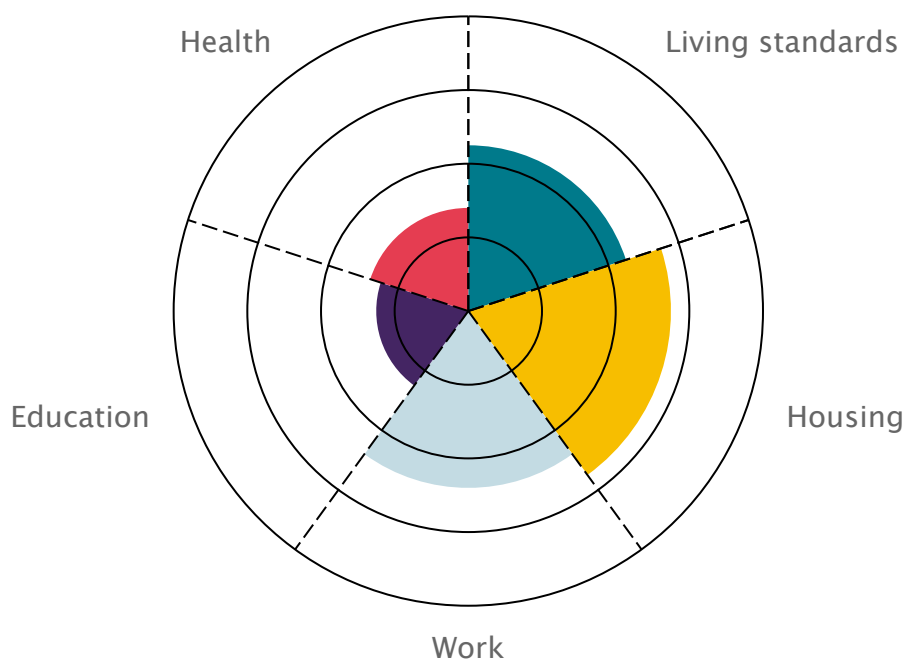


London’s Poverty Profile provides evidence on and insight into poverty and inequality in London. It shines a light on these issues to prompt action from local and national government, the third sector, faith groups, practitioners, experts, businesses, the public and indeed anyone who cares about making London a fairer city to live in.

This factsheet draws together insights specifically for Bexley from the wider set of indicators published in London’s Poverty Profile.

For details of the data sources and methods used please see <https://trustforlondon.org.uk/data/boroughs/overview-of-london-boroughs/>

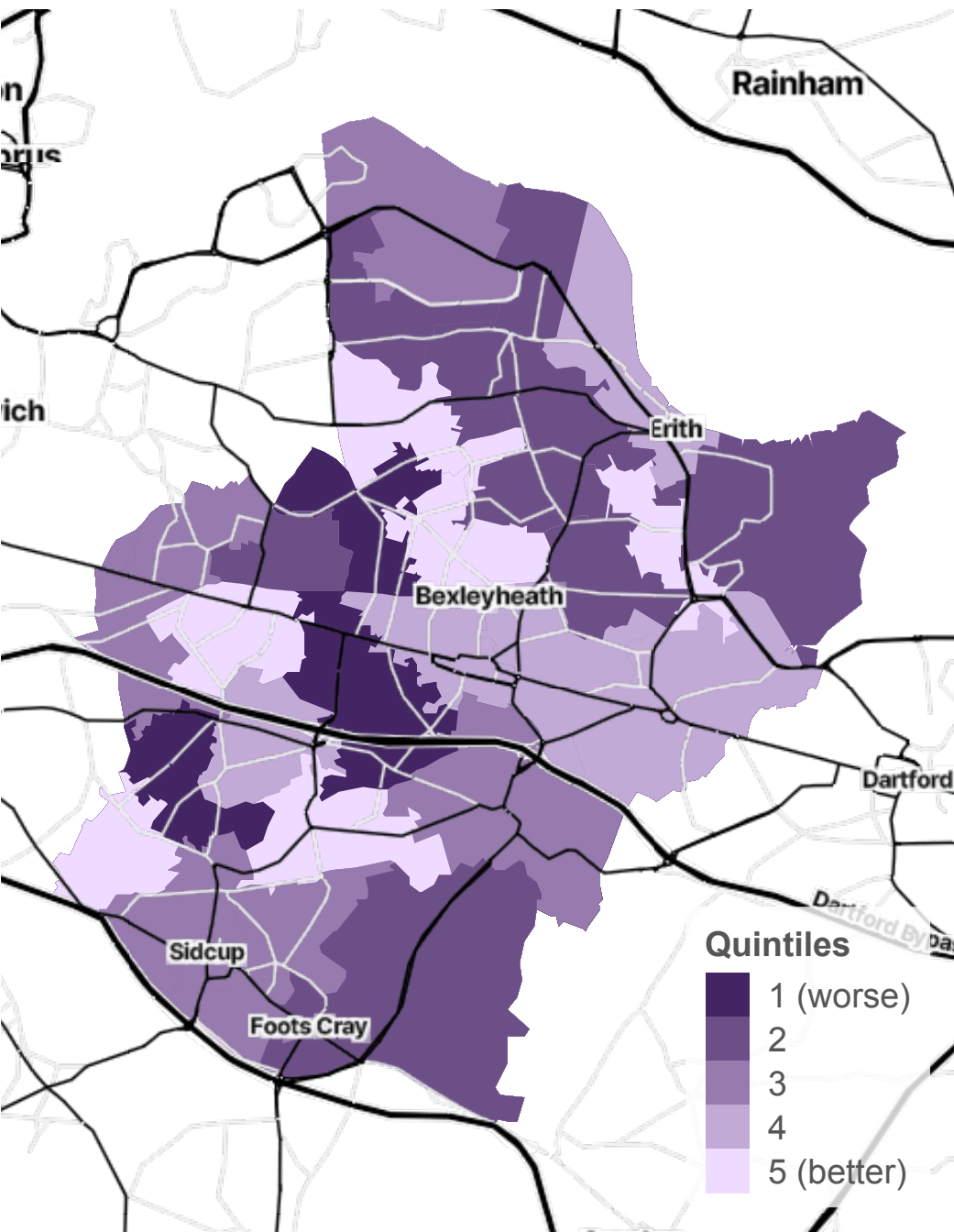


The chart above summarises the boroughs' indicators across each of our themes. The center represents worse performance, outer rings better

Key Points

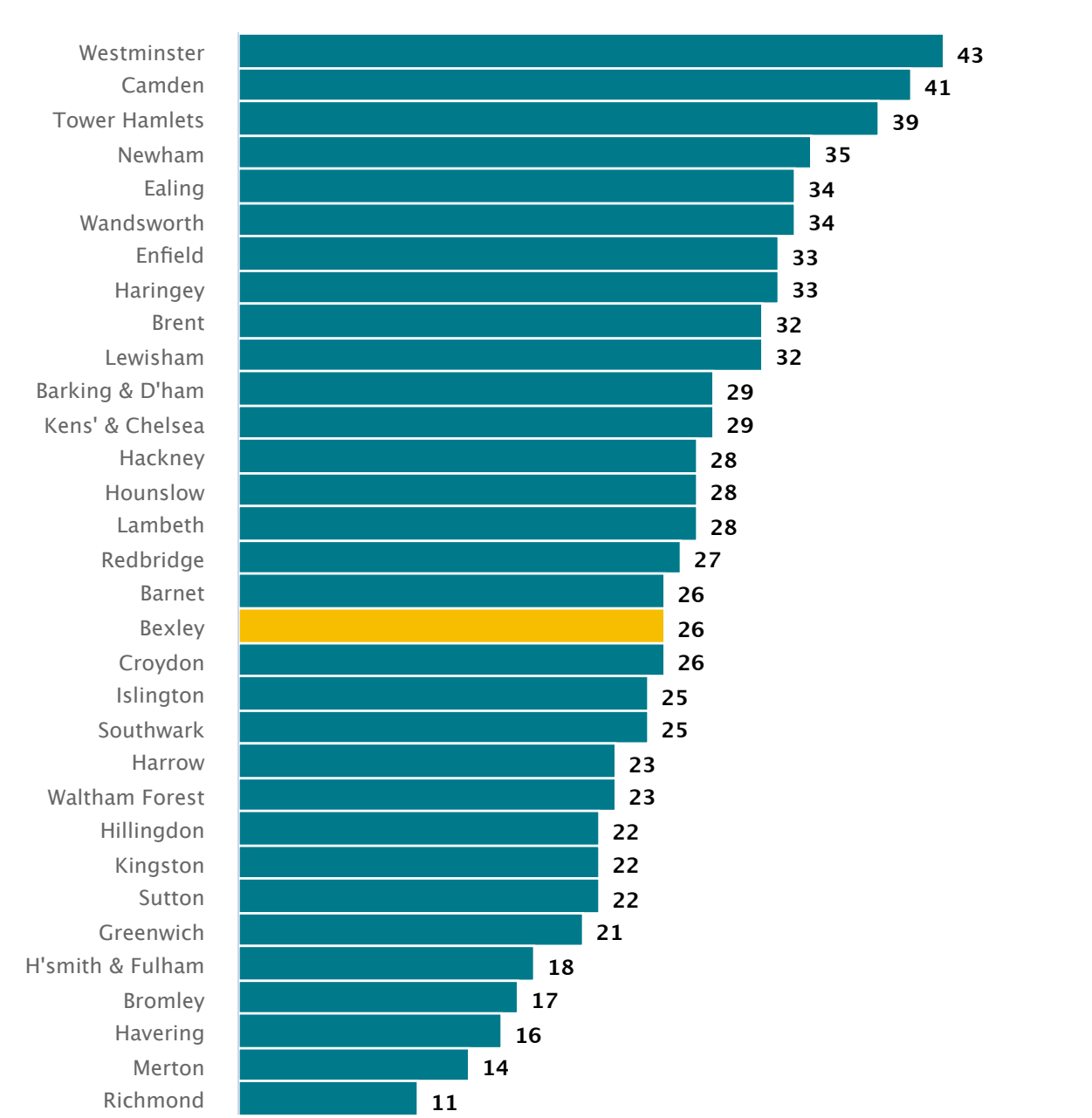
- In 2021/22, 26% of people in the borough lived in households with an income of less than 60% the UK median after housing costs have been subtracted. This was around the same as the average London Borough.
- 26% of children in the borough lived in households with an income of less than 60% the UK median after housing costs have been subtracted in 2021/22. This was around the same as the average London Borough.
- In Bexley, 16.7% of residents were estimated to be earning below the Living Wage in 2023. This was around the same as the average London Borough.
- Pay inequality as measured by the ratio of wages at the 80th percentile to the 20th percentile in 2023 was better than the average London Borough at (2.29).
- Average rent for a one-bedroom house or flat on the private market was at least 33.2 percent of median pre-tax pay in London in October 2022 to September 2023. This was better than the average London Borough.
- GCSE attainment was worse than the average London Borough in Bexley, with 71.9% of students achieving grades 9-4 (A*-C under the old grading system) in GCSE English and Maths in 2021/22
- Infant mortality rates per 1,000 live births in Bexley were worse than the average London Borough at 6 in 2019-21

Income estimates 2018



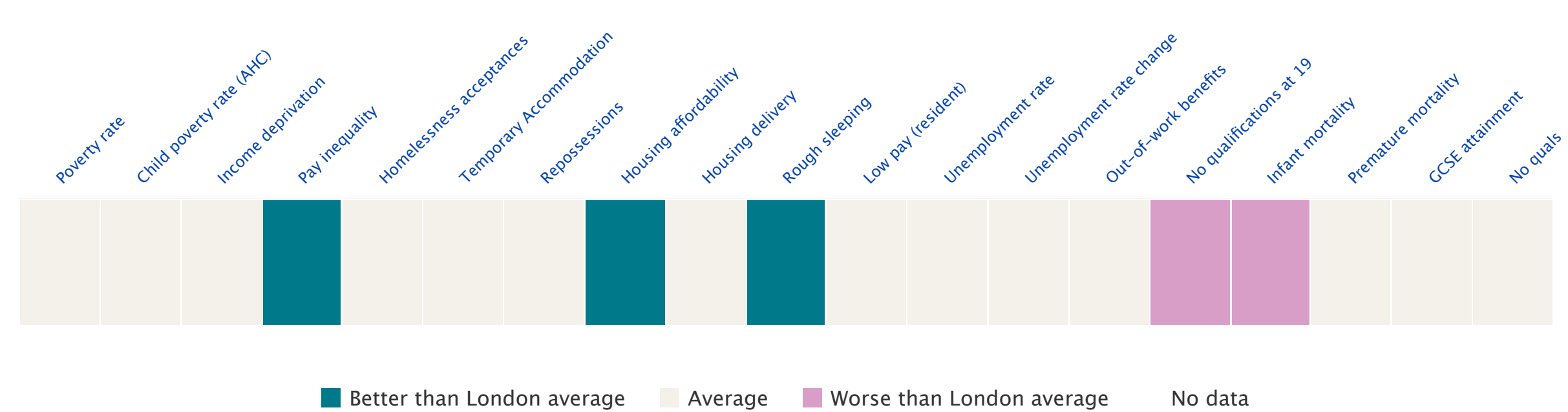
Source: MSOA Income estimates 2018, ONS

Poverty rate 2019/2020



Source: Households below average income 5 year averages to 2019/2020, DWP

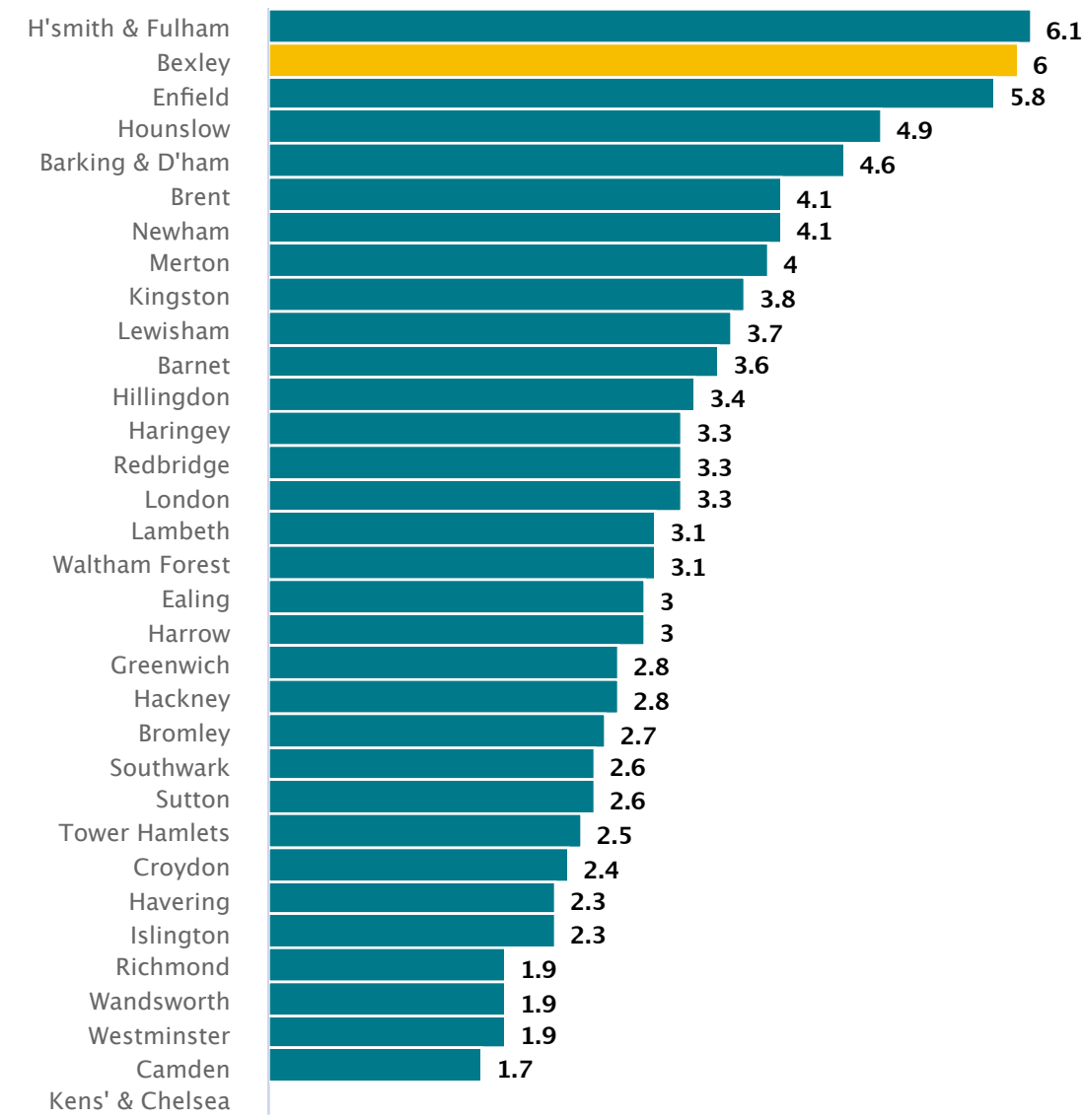
Bexley ratings across key indicators



Looking across all the indicators collected at Borough level for the London Poverty Profile, Bexley did worst for Infant mortality rate per 1,000 live births by London borough, and best for 80:20 hourly wage ratio by London borough.

Worse for:

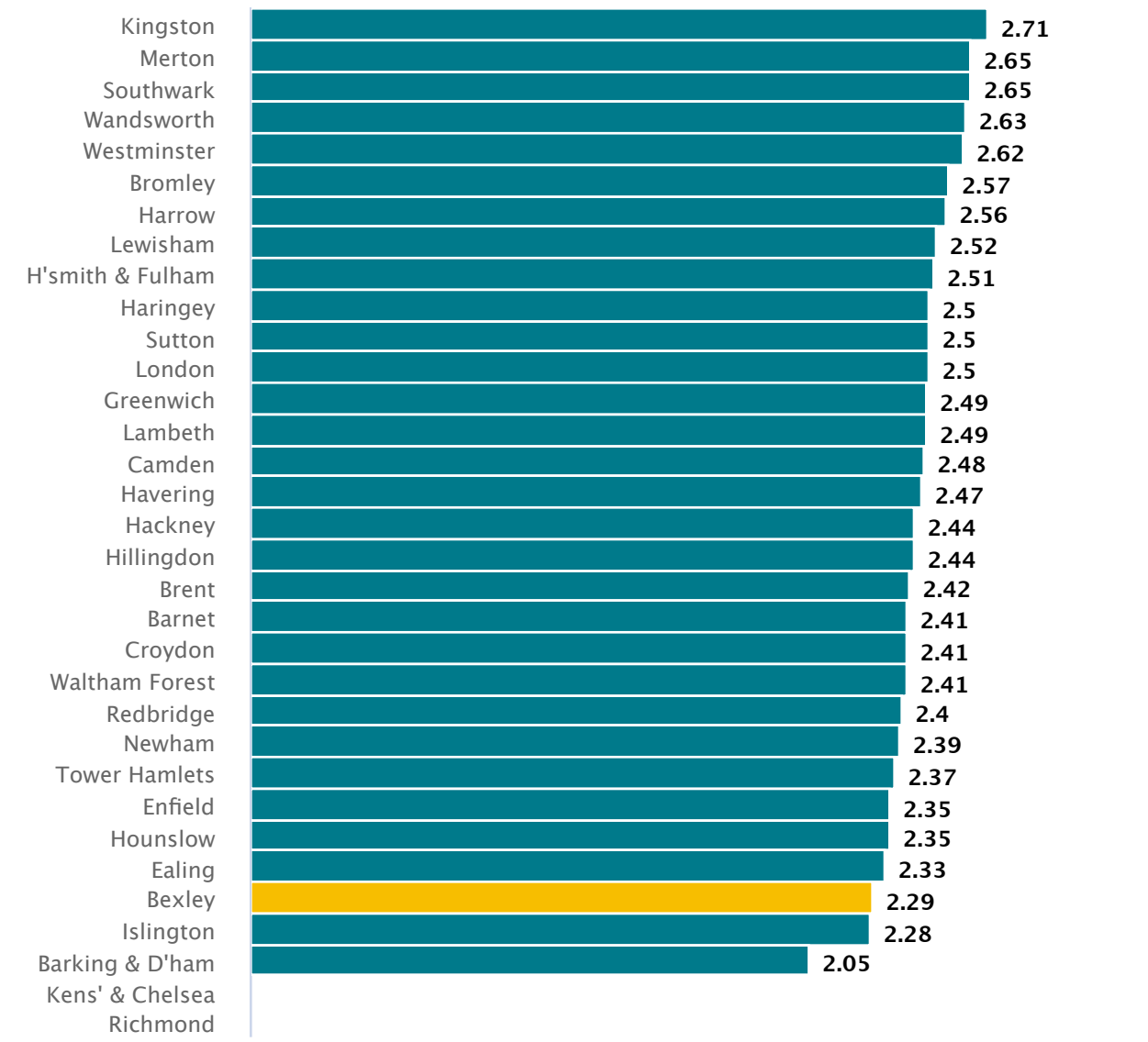
Infant mortality rate per 1,000 live births 2019-21



Source: Office for National Statistics

Better for:

80:20 ratio of earnings 2023



Source: Annual Survey of Hours and Earnings via NOMIS, ONS